

National Network to Eliminate Disparities in Behavioral Health  
Virtual Roundtable

# We will be starting soon, thank you for joining us!

## COMMUNITIES RESPOND TO COVID-19: Implications for Asian Pacific Islanders



Attendees are muted, so please  
share comments and ask  
questions in the **questions box**



Resources and the recording will be available  
following the roundtable at [share.nned.net](https://share.nned.net)



Provide us with feedback in  
the post-roundtable survey



# WELCOME & INTRODUCTIONS – ABOUT THE NNED



National Network to Eliminate  
Disparities in Behavioral Health

A network of over **4,300 individuals**, including more than **1,100 community-based organizations** striving for behavioral health equity for for all individuals, families, and communities.



**Dr. Rachele Espiritu**

Founding Partner, Change Matrix  
Director, NNED National Facilitation Center



# WELCOME & INTRODUCTIONS – ABOUT THE NNED



share.nned.net

NNEDshare is a collective space for behavioral health resources and innovative interventions.

**For COVID-19 Resources:**

<https://share.nned.net/2020/04/resources-for-responding-to-covid19>



**Dr. Rachele Espiritu**

Founding Partner, Change Matrix  
Director, NNED National Facilitation Center



## WELCOME & INTRODUCTIONS - LOGISTICS



Share comments  
and ask questions in  
the **questions box**



Resources and the  
recording will be  
available following the  
roundtable at  
[share.nned.net](https://share.nned.net)



Provide us with  
feedback in the post-  
roundtable survey



## OBJECTIVES FOR THE DAY

- Emerging behavioral health needs for API communities
- Community approaches addressing API behavioral health needs
- Community approaches for addressing discrimination and stigma experienced by APIs
- Strategies for providing culturally and linguistically appropriate mental health and emotional support services to API populations



# COMMUNITIES RESPOND TO COVID-19 with Innovative High-impact Strategies

Introductions

Setting  
the Stage

Panelist  
Discussion

Resources

Final  
Thoughts



National Network to Eliminate Disparities  
in Behavioral Health  
Virtual Roundtable



## SETTING THE STAGE



**Dr. Victoria Chau**

Public Health Analyst,  
Substance Abuse and Mental Health Services  
Administration  
Office of Behavioral Health Equity



## SETTING THE STAGE

### POPULATION (U.S. Census Bureau 2017)

**21.6 million** Asian Americans

**1.4 million** Native Hawaiians and Pacific Islanders

### 50 ETHNICITIES

Asian Americans, Native Hawaiians, and Pacific Islanders consist of over 50 distinct ethnicities

### LANGUAGE

English as a first language vs.  
English as a second language (more  
fluent in native tongue)

### LIMITED ENGLISH

#### PROFICIENCY (U.S. Census Bureau 2017)

45% Vietnamese Americans vs.  
13% Japanese Americans  
13% Tongans vs. 2% Native Hawaiians



## SETTING THE STAGE



**Juliet Bui**

Public Health Analyst,  
U.S. Department of Health and Human  
Services (HHS) Office of Minority Health



## OUR ROUNDTABLE PANELISTS



**Amanda Lee**

Per Diem Adult/Older Adult  
Mental Health Director  
Union of Pan Asian Communities



**Perry Chan**

Program Manager  
Asian American Health Initiative,  
Montgomery County Department of  
Health and Human Services



**Dr. Doris Chang**

Licensed Psychologist and  
Associate Professor  
New York University Silver  
School of Social Work



**Dr. Russell Jeung**

Professor and Chair of the Asian  
American Studies Department  
San Francisco State University



**Dr. Pata Suyemoto**

Mental Health Advocate,  
Co-founder  
The Breaking Silences Project

## NATIONAL TRENDS AND INCIDENTS

# Combatting Anti-Asian Racism in the Age of the Coronavirus



**Dr. Russell Jeung**

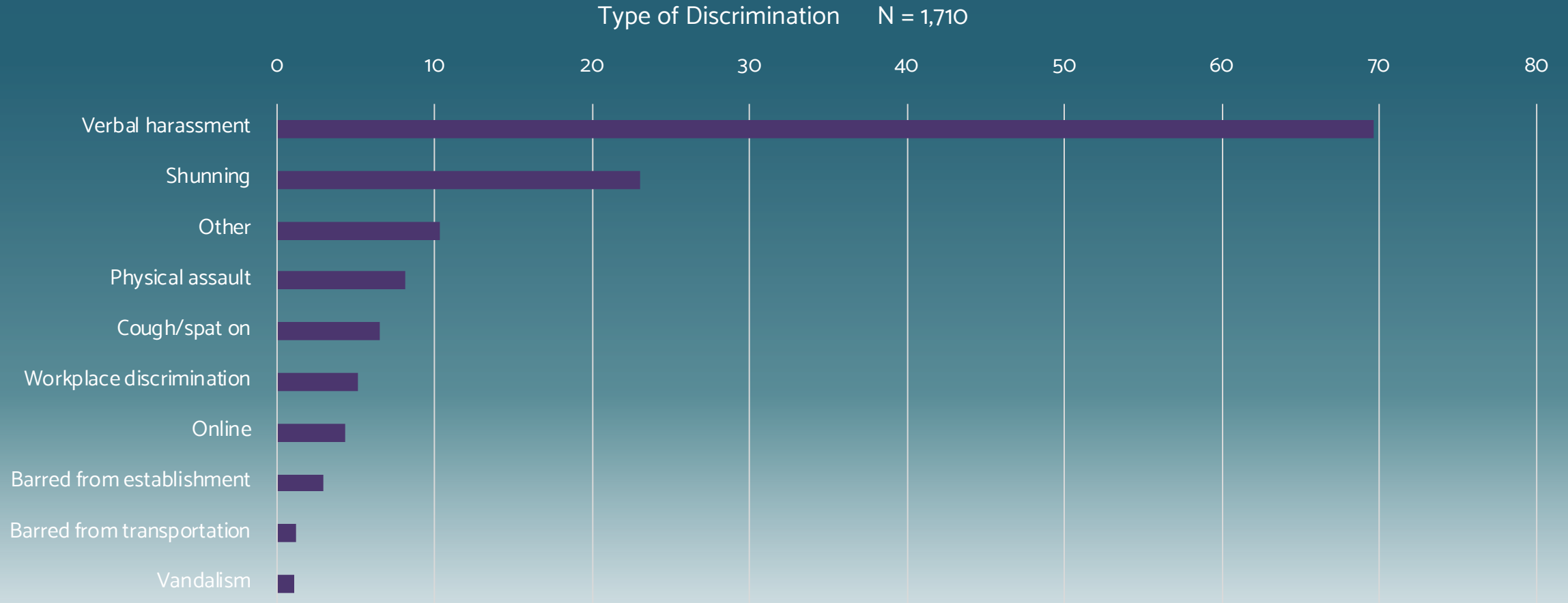
San Francisco State University  
Asian American Studies





## NATIONAL TRENDS AND INCIDENTS

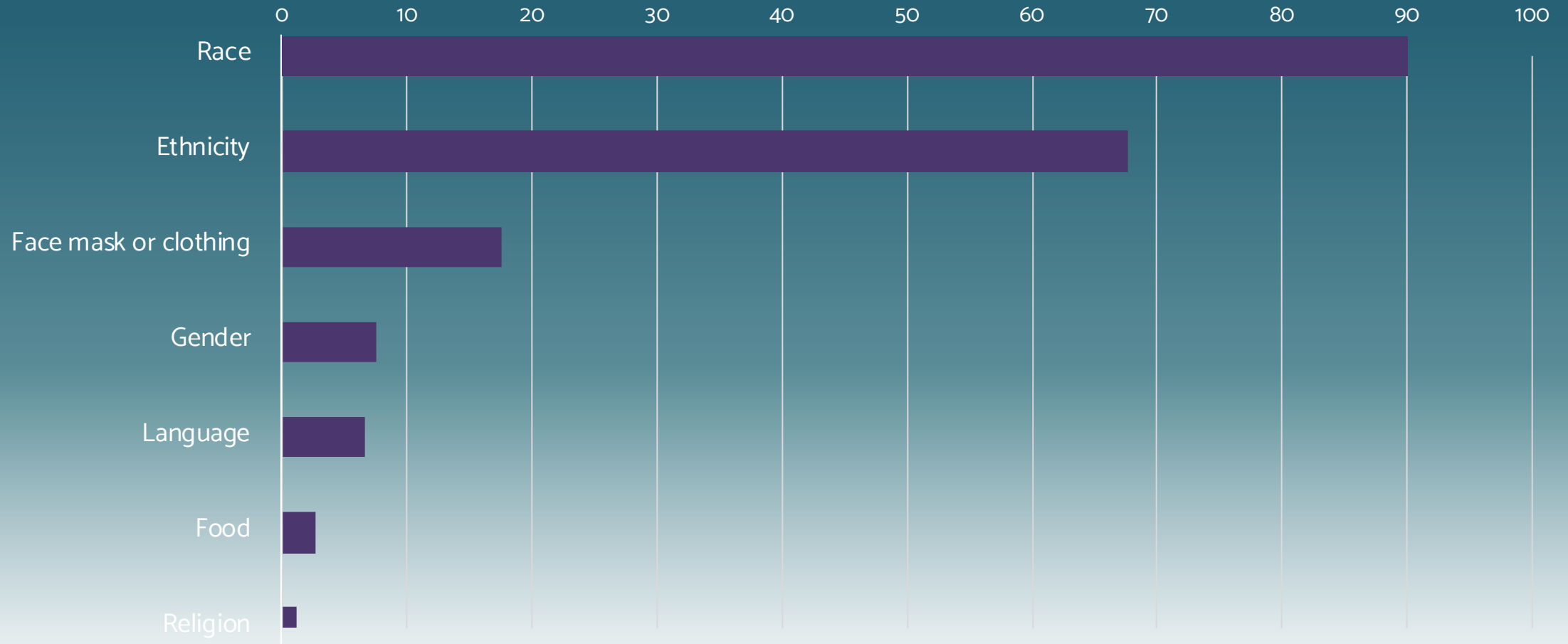
# Type of Discrimination



## NATIONAL TRENDS AND INCIDENTS

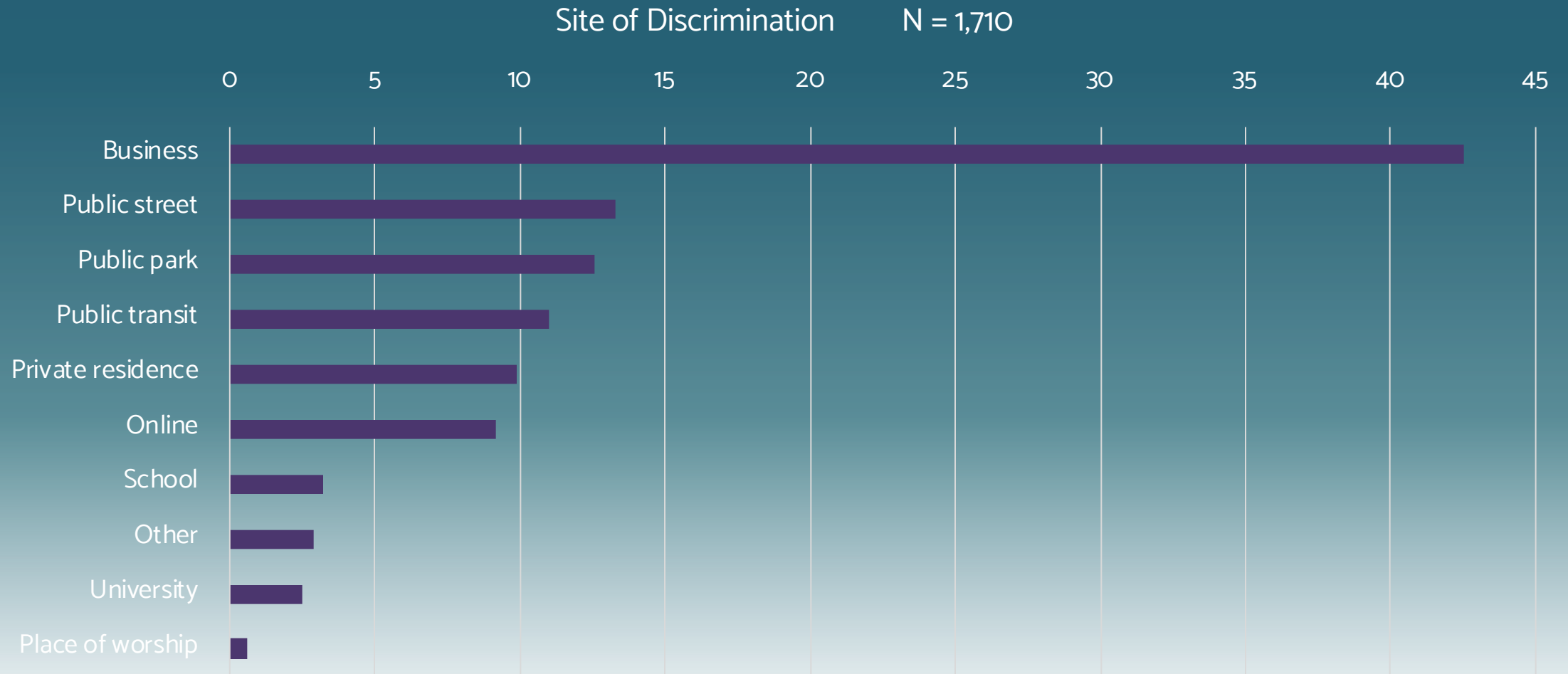
# Reason for Discrimination

Suspected Reason for Discrimination N = 1,710



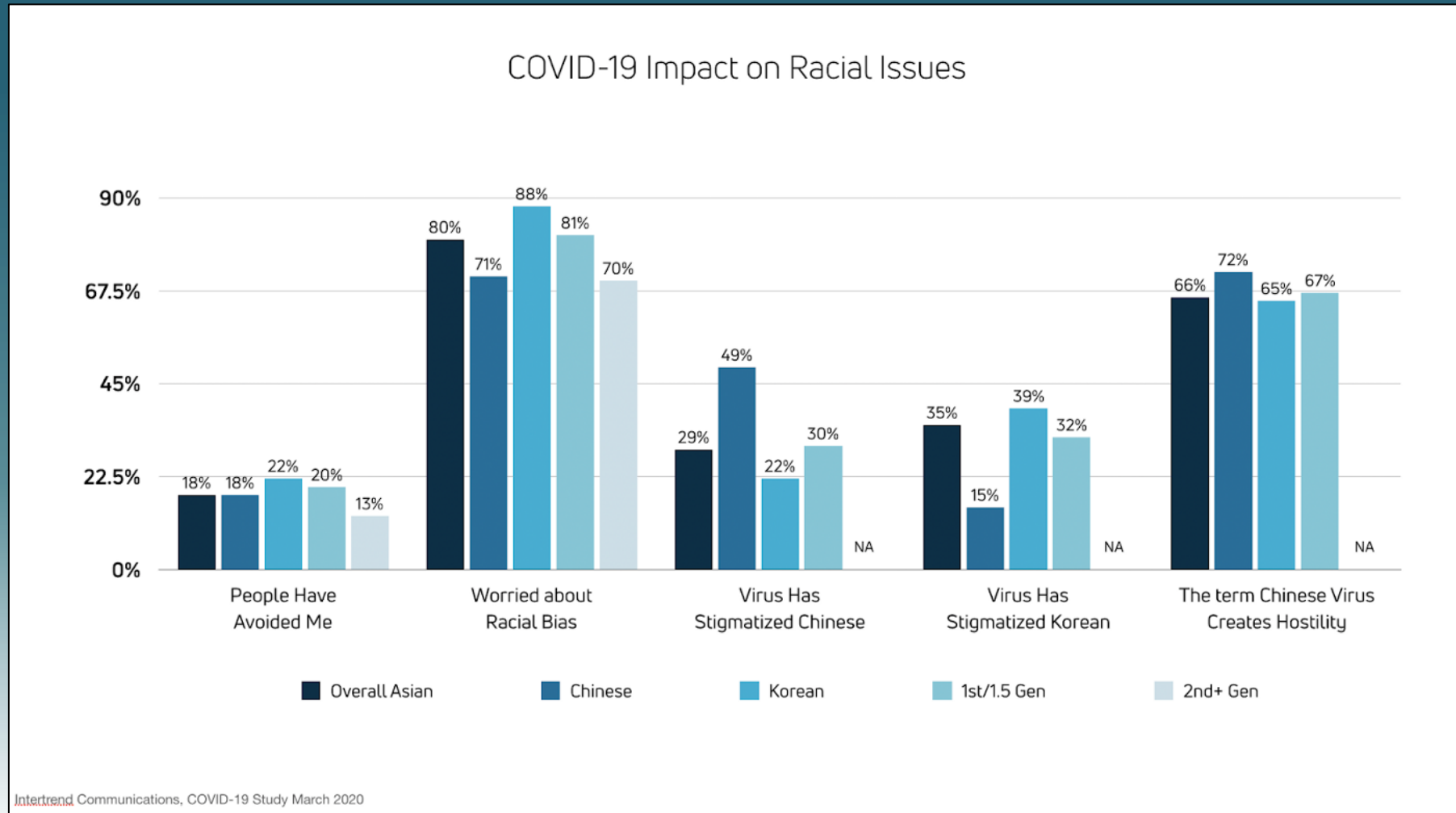
## NATIONAL TRENDS AND INCIDENTS

# Site of Discrimination





# Fear of Racial Bias



## NATIONAL TRENDS AND INCIDENTS

### WHAT ASIAN AMERICANS ARE DOING TO PROTECT THEMSELVES

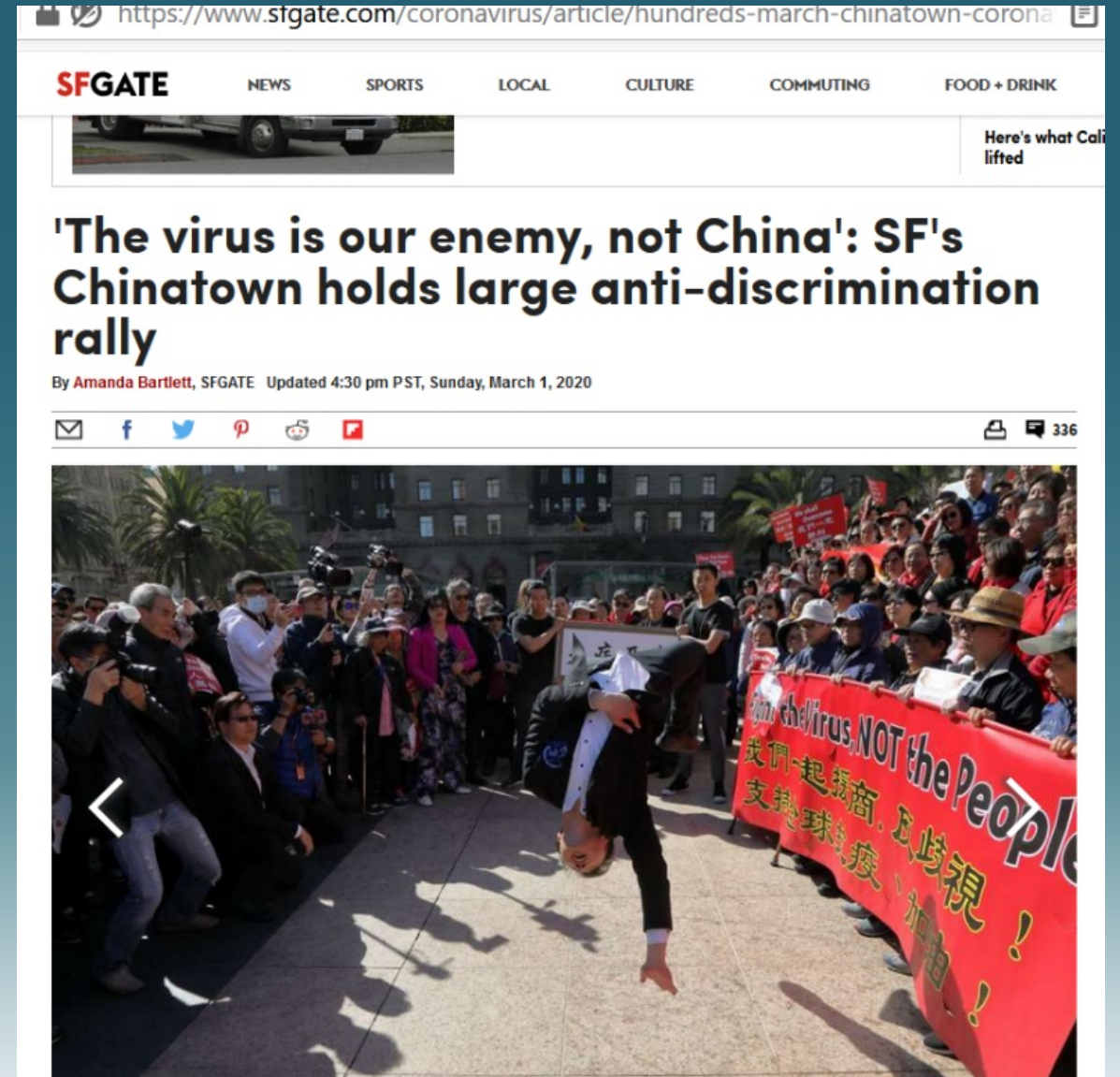
1. Correct Narratives
2. Counter Media
3. Build Community Coalitions
4. Report Hate—Stop AAPI Hate, a new reporting tool

#### House lawmaker proposes legislation to denounce coronavirus-related racism

The legislation stipulates that the House would condemn all forms of racism and scapegoating and call on public officials to denounce any anti-Asian sentiment, as well.



# CORRECT NARRATIVES







# COUNTER MEDIA

## NATIONAL TRENDS AND INCIDENTS

WWW.ASIANPACIFICPOLICYANDPLANNINGCOUNCIL.ORG/  
STOP-AAPI-HATE

# BUILD COMMUNITY COALITIONS



## 因冠狀病毒引發對亞裔和太平洋島居民種族歧視的報告

在過去的幾周中，世界遭受了世界衛生組織所謂的“全球流行病”的打擊。隨著 Covid-19 病毒的傳播，許多亞裔美國人和太平洋島民（AAPI）都紛紛報告他們遭受了小型攻擊，種族歧視和仇恨事件，在某些情況下還受到了仇恨引發的暴力對待。在洛杉磯的聖費爾南多谷，壹名兒童他就讀的中學遭到毆打，並被指控患有冠狀病毒，僅僅是因為他是亞裔美國人和太平洋島民。在舊金山的壹條街道上，壹名年輕的亞裔美國人和太平洋島民的女性被路人吐口水，並被指責將冠狀病毒帶入了美國。由此，加州的亞裔和太平洋島的青年，成年人乃至老年人都逐漸開始恐懼被周圍人視為病毒的攜帶者或來源。

亞太政策與規劃委員會（A3PCON）和華人權益促進會（CAA）已啟動了針對由冠狀病毒引發的歧視和暴力事件的報告中心，使社區成員能夠及時報告自身經歷的類似事件。居民報告後，個人信息（包括個人身份信息）將被保密，並且只有在獲得許可的情況下才能共享。總體而言，這些信息將用於援助受害者，宣傳和教育社區民眾。

我們正在將此表格翻譯成其他語言，請耐心等待。

感謝您向亞太政策與規劃委員會（A3PCON）和華人權益促進會（CAA）報告您

# REPORT HATE

- Collective Voice
- Resources for Resilience
- Strategic Policy Interventions
- Governor's Strike Team

## Help **#StopAAPIHate**

If you or someone you know has experienced discrimination due to #COVID19, please speak up and report to: [a3pcon.org/StopAAPIHate](https://a3pcon.org/StopAAPIHate)



促進會  
華人權益  
CAAM  
MOVEMENT FORWARD

**A3PCON**  
ASIAN PACIFIC POLICY & PLANNING COUNCIL

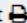





## NATIONAL TRENDS AND INCIDENTS


COMBATTING STEREOTYPES

## Asian Americans Organize in Face of Racist Pandemic Reaction

Steve Dubb  
March 26, 2020

Print 

f 69     2    in         71 SHARES



# ORGANIZE OUR COMMUNITIES

## PANELIST DISCUSSION – QUESTION 1

# How has the COVID-19 pandemic influenced the behavioral health of your API community?

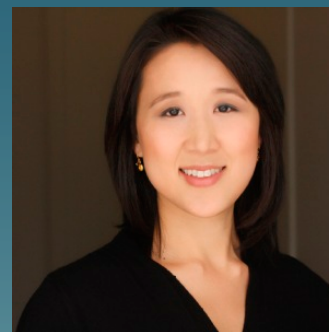


Facilitated by

Rachele Espiritu



Amanda Lee



Dr. Doris Chang



Dr. Pata Suyemoto



Perry Chan



Dr. Russell Jeung

## PANELIST DISCUSSION – QUESTION 2

What are the innovative community-level strategies to support the behavioral health needs of APIs in your community?

How does the strategy incorporate culture and language?

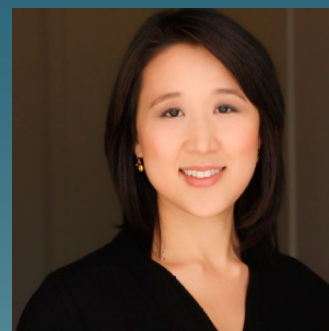


Facilitated by

Rachele Espiritu



Amanda Lee



Dr. Doris Chang



Dr. Pata Suyemoto



Perry Chan



Dr. Russell Jeung





Society for the Psychological Study  
Of Culture, Ethnicity and Race  
DIVISION OF THE AMERICAN PSYCHOLOGICAL ASSOCIATION (APA)

## TIPS FOR FAMILIES DEALING WITH COVID-19 ANTI-ASIAN DISCRIMINATION

*With harassment and attacks on the rise, it's crucial to support children and adolescents who might be confused or upset. Here's how:*

1

### ACKNOWLEDGE

This virus is making many people afraid and angry. It's causing people to say or do horrible things.

2

### VALIDATE

These words or actions really hurt.

3

### REFRAME

It's not our fault. What they say does not define who we are.

4

### REPORT

Submit an incident report through the Asian American and Pacific Islander Planning Council's portal.

## #STOPAAPIHATE

[DIVISION45.ORG](https://division45.org) AND [AAPAONLINE.ORG](https://aapaonline.org)

Brought to you by the APA Society for the Psychological Study of Culture, Ethnicity and Race and the Asian American Psychological Association.



**Dr. Doris Chang**

PANELIST DISCUSSION – QUESTION 3

How are APIs experiencing discrimination and stigma related to COVID-19?  
What are you doing to address this issue?

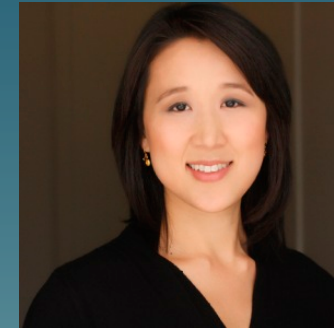


Facilitated by

Rachele Espiritu



Amanda Lee



Dr. Doris Chang



Dr. Pata Suyemoto



Perry Chan



Dr. Russell Jeung

## PANELIST DISCUSSION – QUESTION 4

What can people do at an individual and community level to help reduce fears and anxiety?

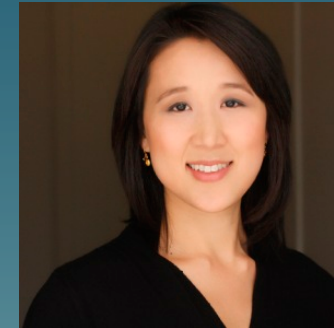


Facilitated by

Rachele Espiritu



Amanda Lee



Dr. Doris Chang



Dr. Pata Suyemoto



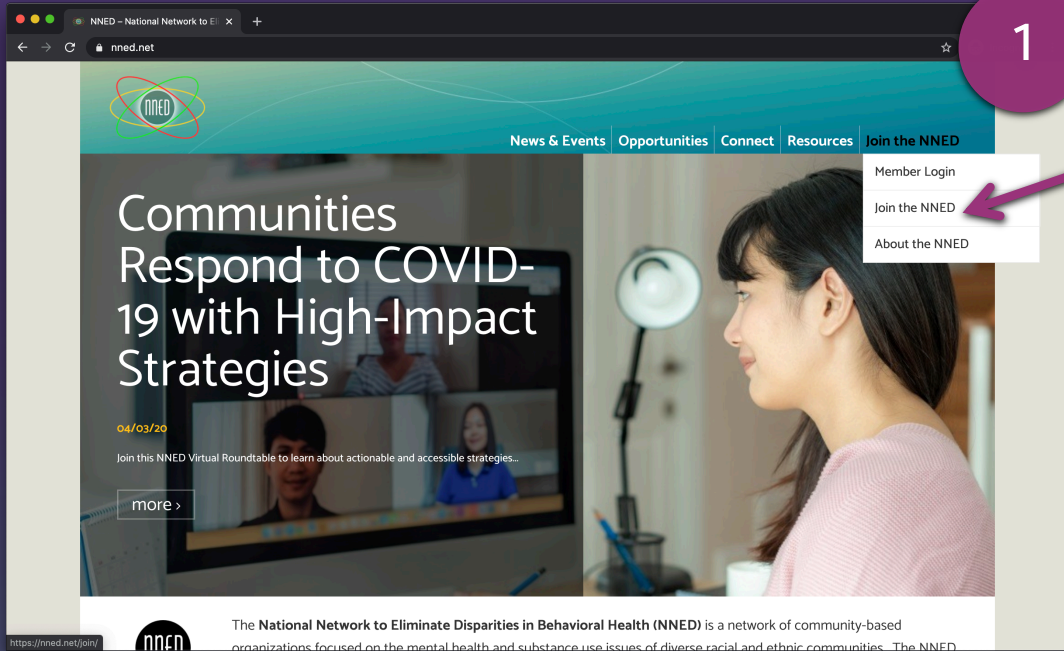
Perry Chan



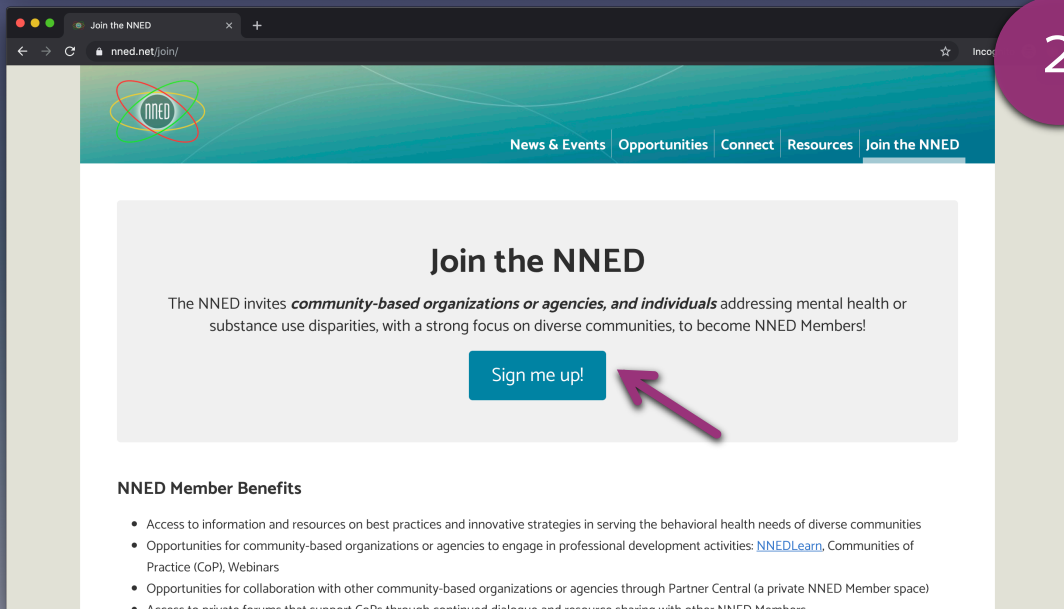
Dr. Russell Jeung

## RESOURCES – BECOME A MEMBER

1



2



# Join the Network!

## <https://nned.net/join>



Shared by  
**Alina Taniuchi**



## RESOURCES – PARTNER CENTRAL

Find Community-based Organizations in Partner Central\*

<https://nned.net/members>

\*NOTE: You must be a logged-in NNED member to access Partner Central

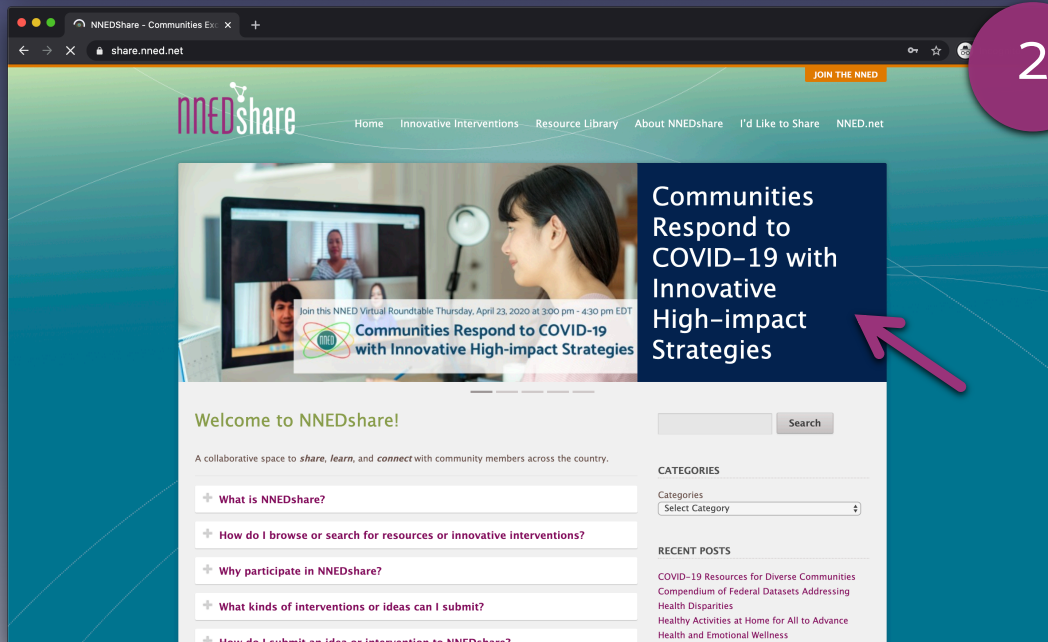
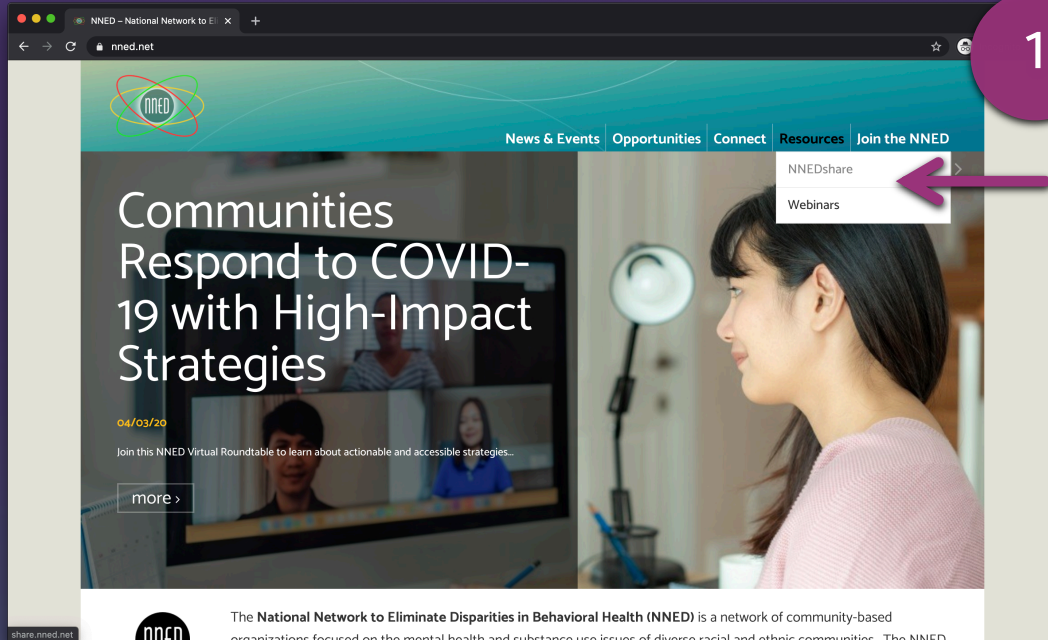


Shared by  
**Alina Taniuchi**

1

2

The screenshot shows the NNED website interface. The top navigation bar includes links for News & Events, Opportunities, Connect, Resources, and Join the NNED. The 'Partner Central' link is highlighted in the 'Connect' dropdown menu. The main content area features a large article titled 'Communities Respond to COVID-19 with High-Impact Strategies' with a date of 04/03/20 and a 'more >' link. Below the article, a brief description of NNED is provided. The second screenshot shows the 'Partner Central' page, which includes a search bar with a 'Search' button, a dropdown menu for 'Click here to learn how to use Partner Central', and a section for 'Search for NNED members' with various filters like State, Primary Population of Focus, Focus Areas, Language Services, Type of Service(s), and Age Range. The search results show 562 Members.



Explore NNEDshare!  
<https://share.nned.net>



Shared by  
**Alina Taniuchi**

## FINAL THOUGHTS – LIGHTNING ROUND

Can you share a phrase or practice from your API culture that relates to today's conversation?

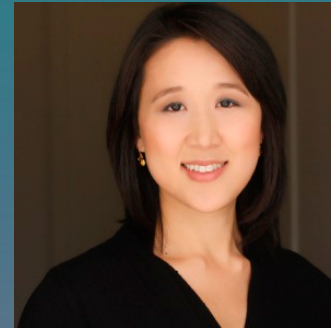


Facilitated by

Rachele Espiritu



Amanda Lee



Dr. Doris Chang



Dr. Pata Suyemoto



Perry Chan



Dr. Russell Jeung

## FINAL THOUGHTS

# THANK YOU FOR JOINING US TODAY!



To view resources related to this webinar and the recording, visit <https://share.nned.net>



Questions? Email [connect@nned.net](mailto:connect@nned.net)



Join the NNED to join us for future learning opportunities: [nned.net/join](https://nned.net/join)



Please provide  
your feedback in  
the survey!